



Aviation Investigation Preliminary Report

| | | | |
|--------------------------------|---|-------------------------|------------|
| Location: | Yuma, AZ | Accident Number: | WPR24LA038 |
| Date & Time: | November 17, 2023, 20:30 Local | Registration: | N2024C |
| Aircraft: | Beech 95 | Injuries: | 2 None |
| Flight Conducted Under: | Part 91: General aviation - Instructional | | |

On November 17, 2023, about 2030 mountain daylight time, a Beech 95, N2024C, was substantially damaged when it was involved in an accident near Yuma, Arizona. The flight instructor and student pilot were not injured. The airplane was operated as a Title 14 Code of Federal Regulations Part 91 instructional flight.

The flight instructor reported that, shortly after departing from the airport, the pilot receiving instruction noticed a vibration in the rudder trim and that the airplane was beginning to oscillate. The flight instructor assumed control of the airplane and elected to return to the airport. During the return to the airport, the oscillations intensified, which caused the front windshield to separate from the airplane. The flight instructor advised the pilot receiving instruction to declare an emergency as he landed the airplane without further incident.

Postaccident examination of the airplane by a Federal Aviation Administration inspector revealed that the rudder trim tab rod was fracture separated near the trim tab attachment point and the forward windshield had separated which resulted in substantial damage. The wreckage was recovered for further examination.

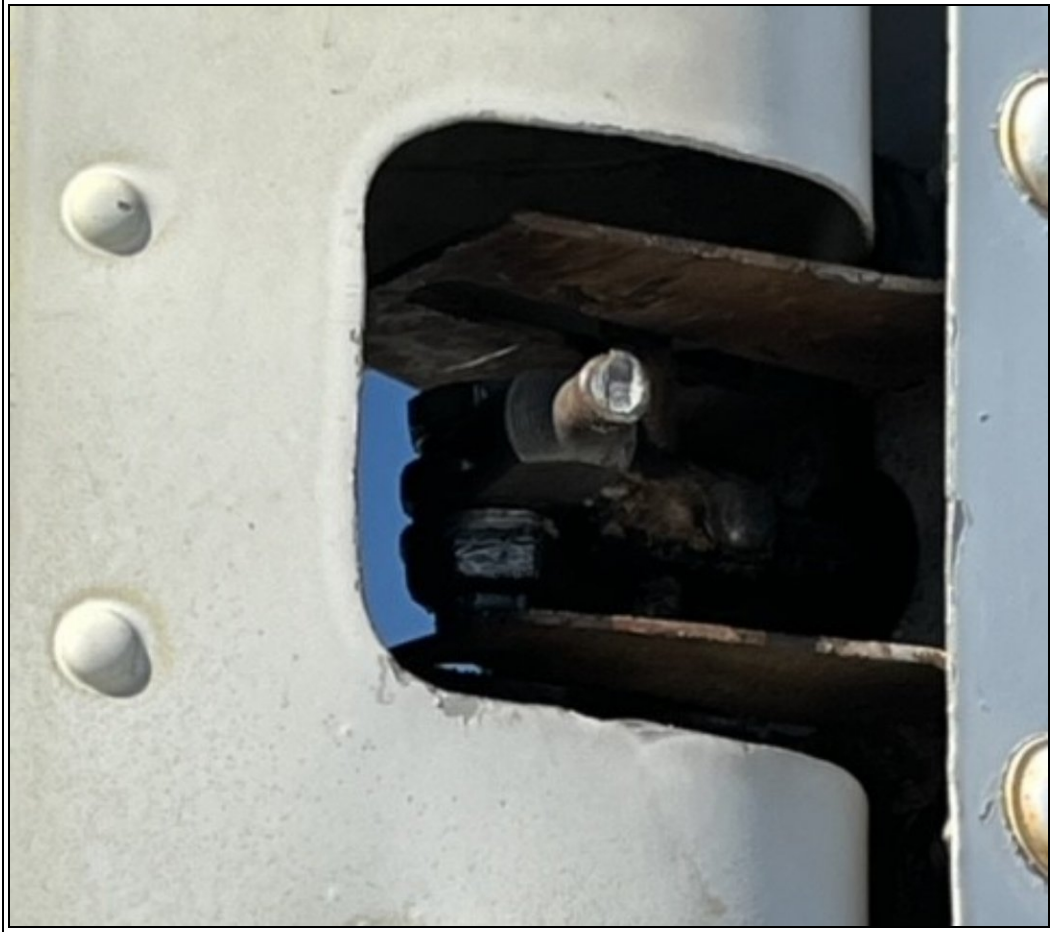


Figure 1: View of damaged rudder trim tab rod end (photo courtesy of the FAA)

Aircraft and Owner/Operator Information

| | | | |
|----------------------------------|---------|---------------------------------------|----------|
| Aircraft Make: | Beech | Registration: | N2024C |
| Model/Series: | 95 | Aircraft Category: | Airplane |
| Amateur Built: | | | |
| Operator: | On file | Operating Certificate(s) Held: | None |
| Operator Designator Code: | | | |

Meteorological Information and Flight Plan

| | | | |
|---|-------------------------|-------------------------------------|-------------------|
| Conditions at Accident Site: | VMC | Condition of Light: | NightDark |
| Observation Facility, Elevation: | KNYL,213 ft msl | Observation Time: | 20:57 Local |
| Distance from Accident Site: | 1 Nautical Miles | Temperature/Dew Point: | 20°C /12°C |
| Lowest Cloud Condition: | Scattered / 6000 ft AGL | Wind Speed/Gusts, Direction: | / , |
| Lowest Ceiling: | Broken / 8000 ft AGL | Visibility: | 7 miles |
| Altimeter Setting: | 29.96 inches Hg | Type of Flight Plan Filed: | None |
| Departure Point: | Yuma, AZ | Destination: | Kingman, AZ (IGM) |

Wreckage and Impact Information

| | | | |
|----------------------------|--------|-----------------------------|----------------------------|
| Crew Injuries: | 2 None | Aircraft Damage: | Substantial |
| Passenger Injuries: | N/A | Aircraft Fire: | None |
| Ground Injuries: | | Aircraft Explosion: | None |
| Total Injuries: | 2 None | Latitude, Longitude: | 32.656574,-114.60598 (est) |

Administrative Information

| | |
|--|--|
| Investigator In Charge (IIC): | Gutierrez, Eric |
| Additional Participating Persons: | Leon (Pete) L. Kelley; Federal Aviation Administration; Scottsdale, AZ |
| Investigation Class: | Class 3 |
| Note: | The NTSB did not travel to the scene of this accident. |